

powermat®

# Charging Spot 4.0

Easily transform everyday surfaces into cable-free charging stations, powered by SmartInductive™ technology

## Wireless Charging Spot—No drilling required!

Charging Spot 4.0 transfers power using Powermat's SmartInductive™ technology. This technology enables transferring magnetic induction fields over a longer distance, allowing easy installation using a base unit and top layer sticker on surfaces up to 1.5' thick. This unique architecture enables transformation of any surface into a wireless charging surface with no drilling or complicated installation process. Each unit is connected to a network, allowing for remote monitoring and upgrades and also for real time customer engagement activity.



### UNIVERSAL SUPPORT

Compatible with Qi, AirFuel, Apple 7.5W and fast charging capabilities



### FASTER CHARGING

Charging speed up to 8 times of industry standard (40W)



### IOT PLATFORM

BLE based connectivity enabling Charging Spot management and location based services



### ENHANCED Z RANGE

Charging through 0.5-1.5" thick surfaces



### LOWER COST INSTALLATION

Reduce installation costs by a third, no drilling required



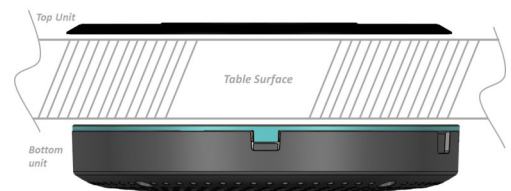
### FUTURE-PROOF

Over the Air updates, providing future upgrades to support new features and functionalities

## Designed for the public space

Charging Spot 4.0 was designed for volatile and high traffic environments.

- Safe in wet environments. The transfer of power is based on magnetic inductance and therefore safe even when the table's surface is wet.
- Charging Spots were designed to withstand chemicals and cleaning solvents.
- Durable and easy to maintain.
- Up to 4 Charging Spots can connect to a single Power Supply for an easy installation process.



# Specifications

## Electrical

Receiver output power:  
up to 15W (extendable to 40W)

DC Voltage input 24V

Current input 0.9A for 15W output

Up to 4 spots connected to one power supply

Operating frequencies:  
Ping 120–150kHz, switch 110–145kHz

Built-in protections: voltage, current, thermal, foreign object detection

## Environmental Data

Operating Ambient Temperature: 0 to 40 °C,  
recommended 25 °C

Non-Operating Ambient Temperature: -20 to 80 °C

Operating Humidity: 20% to 90% (non-condensing)

Non-Operating Humidity: 5% to 95%

## Communication

Includes managed BLE, Bluetooth 4.2,  
Transmit Power 0 dBm

Beacon (BLE) services support iBeacon and Eddystone communication protocols

Remote Firmware Upgrade

Operating frequency: 2.4GHz

## Performance

Nominal Power Transfer Efficiency: 80%

Charging Speed: iPhone 8: 30% in 20m; Samsung Galaxy S8: 17% in 20min (20 min = average charging session length)

## Regulatory Compliance

CE, FCC, RSS – Radiated and Conducted emissions;  
Maximum power exposure; RF Exposure

UL, IEC – Product safety for wireless charging

RoHS, REACH, California Proposition 65 – Environmental restrictions, SOR/2014-254

## Mechanical Parameters

### Parameters

Top surface footprint

### Surface thickness 0.5"-1.5"

Diameter: 5.52" (Ø 140.4 mm)  
Height on edge: 0.14" (3.6mm) above surface  
Height including anti-slip ring: 0.2" (4.2mm)

Bottom surface footprint

Diameter: 6.25" (Ø 159 mm)  
Height: 1.2" (29.5 mm)

Hole type

None

Surface type

Wood/MDF/Ply, Corian (any polymer-based surface), glass & stone surfaces

Tool

None

LED location

Bottom protective cover

Note: Unit can be installed in tables >1.5" by routing the installation area to locally thin the surface to 1.5"

## Artwork & Customization

Non-slip rubber ring to ensure perfect alignment, and avoid device movement during charging

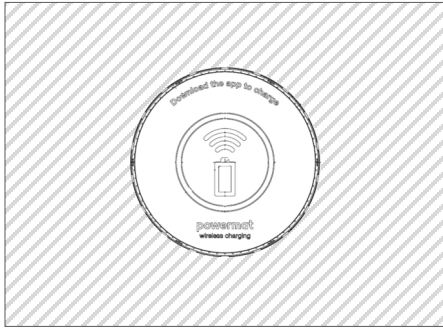
Battery icon for easy central alignment

Color and graphics can be customized

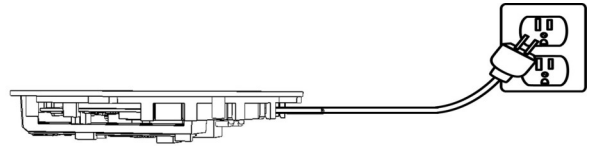
# Easy Installation

Bellow are the high level installation steps for Charging Spot 4.0

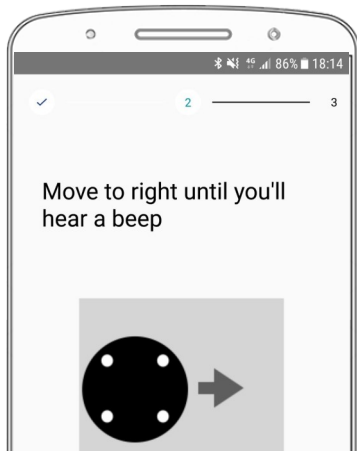
- 1** Fix top unit to the table by removing the film on the bottom of the unit



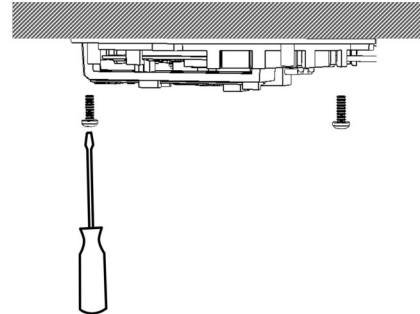
- 2** Connect bottom unit to a power source



- 3** Place bottom chassis under the table and use Powermat installer app to align it with the top unit



- 4** Fasten bottom chassis to the surface using screws



For stone or other hard surface unit can be fixed to the surface with adhesive

- 5** Fasten bottom cover unit to the bottom chassis using screws

